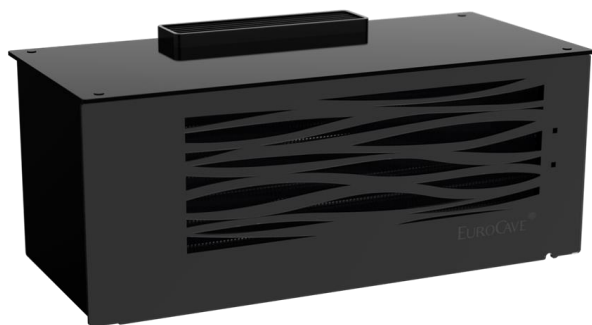


TAHOMA

Wine cellar conditioner
Small areas from 2 to 40 m³



Ref. CCTAHO-230V

2 YEAR
WARRANTY

MADE IN FRANCE

GENERAL FEATURES

Dimensions external unit (mm)	H 706 x L 452 x W 334
Dimensions packaged (mm)	H 700 x L 530 x W 400
Dimensions internal unit (mm)	H 295 x L 693 x W 310
Dimensions packaged (mm)	H 402 x L 800 x l 400
Net weight (kg)	39 (ext.) + 9 (int.)
Gross weight packaged(kg)	30 (ext.) + 16 (int.)
Electric power (W)	230V-50Hz
Refrigerating power (W)	440*
Electric power (W)	564
Heat release (W)	1 420
Refrigerant fluid	R290 (ext.)/H2O (int.) 30L capacity
External temperature range	-8°C***/ +35°C (17,6°F/95°F)

SPECIFICITIES

COMPACT DESIGN

- Adapted to small spaces from 2m³ up to 40m³.
Compatible for environments such as cabinet / showcase
 - 2 to 6m³ with glazed partitions
 - 20 to 40m³ with standard or reinforced insulation**

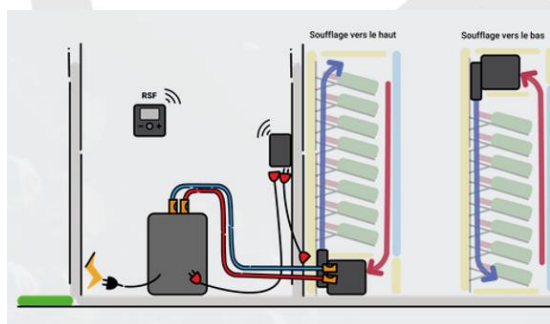
EQUIPMENT & FINISHES

- Tahoma cellar conditioner is made of: internal unit, external unit, connector kit
- Connector kit: 4-8-12-16m
- Wireless remote control. Distance monitoring of the wine room.
*Temperature settings and display from 4 to 18°C – 39-64°F
(Reco 8-18°C – 46-64°F)
Humidity display and adjustment (optional)*
- 3 speeds (4 – 6 – 8): to manage the right ratio between “power/ volume/ acoustic level” Default speed= 6
- Compatible accessories: anti-freeze liquid -18°C/0°F (20L), wall mounting support for inner unit, wall mounting support for outer unit, draining pump and connector for humidifier (autonomous hygrometry management with setting adjustable from 20 to 80%. Recommended hygrometry setting between 60 and 75%)
- PMMA plastic cladding – Glossy black
- Removable front panel – magnetised
- Heat exchangers – Epoxy black painting

TECHNOLOGY

- 2 units: internal unit, external unit
- With a closed water circuit
- Manual hygrometry management with condensate water (autonomous management solution, optional)

INSTALLATION



4-STEP INSTALLATION

Blowing downwards or upwards.

- 1-Connection using electric and hydraulic connectors (Connection kit supplied with the appliance. Choice of 4, 8, 12 or 16 m)
- 2-Filling of the iced water loop (30L)
- 3-Turning on the installation
- 4-Starting and adjusting using the remote control